

Border is a guide only



**Brookvale**



Functional and Versatile Warehouse unit in well appointed Light Industrial Complex, situated on Brookvale Outskirts. With sweeping views to North Head & Sydney CBD this is a must see. Convenient and quiet location which provides ample enjoyment for client and staff alike. Ground floor positioning complete with showroom, storage and garden entrance. Functional layout with dual entrances, mezzanine, workshop and front of house office space. Ground floor area is sub-divided into three functional work areas & 1st bathroom facilities. Mezzanine area professionally laid out as open office and meeting room / breakout area. Abundance of natural light and flow through ventilation.

Benefits Include:-

- ? All weather loading with rollershutter access
- ? High Clearance warehouse.
- ? Renovated bathroom and Kitchen

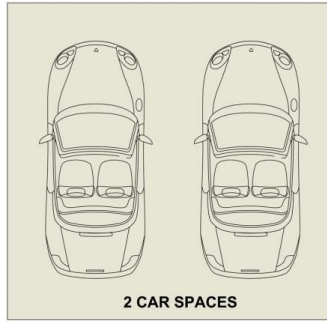
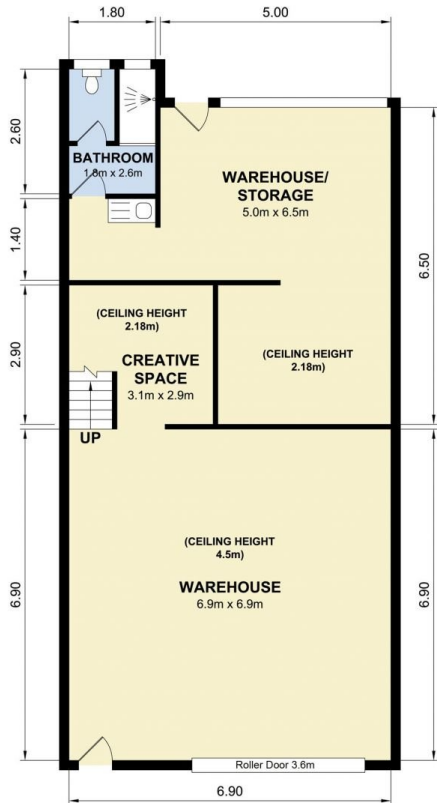
**Building Size** : 139 sqm  
**View** : <https://www.bridgerealty.com.au/sale/nsw/northern-beaches/brookvale/commercial/industrial/7901936>



**Andrew Holland**  
0423 314 862



**Narelle Atack**  
0419 396 788



**UPPER LEVEL**



**Unit 2/222 Headland Road, North Curl Curl**

Measurements are approximate. Not to scale. Illustrative purposes only.  
Open2view does not take any responsibility for any information supplied.