



41/49-51 Mitchell Road Brookvale NSW



Located in the tightly held boutique strata block of Major Mitchell. Well presented Industrial unit - Offering a unique opportunity to Occupy or Invest. Situated on the first floor, high clearance factory, plenty of natural light throughout and benefits from easy truck access via a one-way circulation, with direct access from Mitchell Road. This one ticks all the boxes.

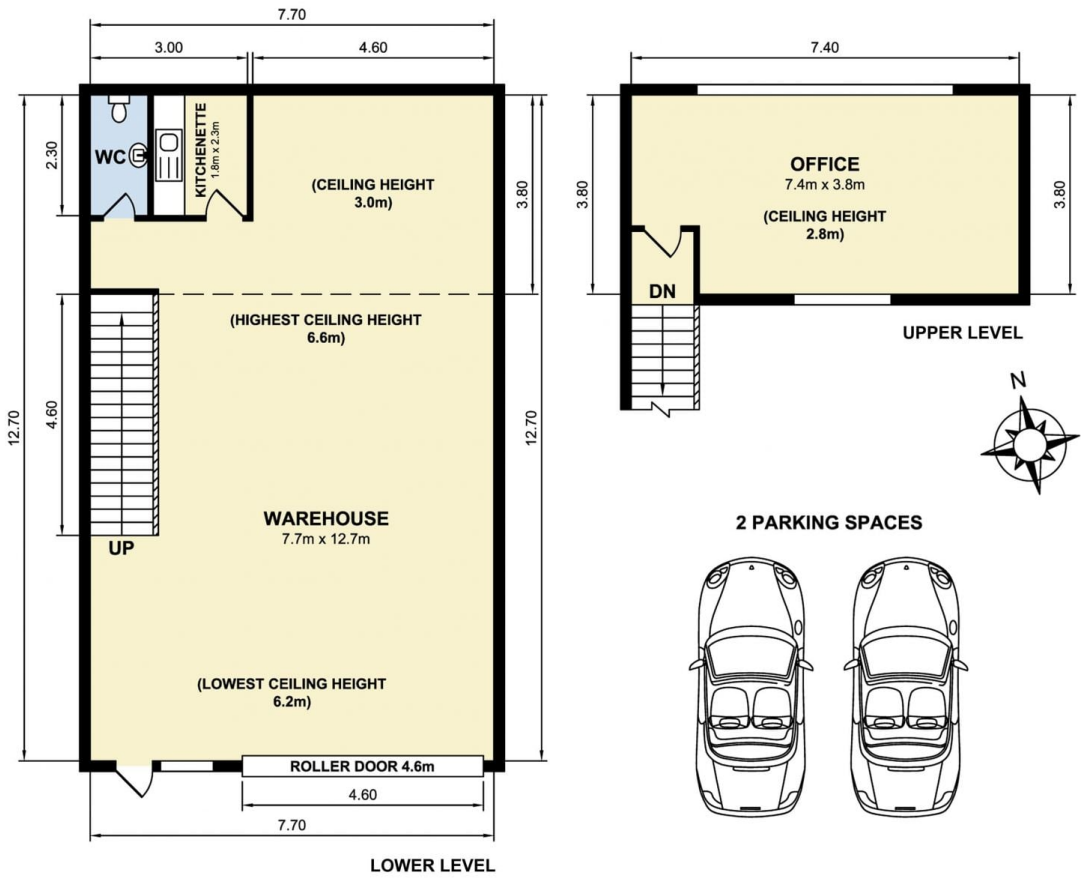
Building Size : 137 sqm
Land Size : 137 sqm
View : <https://www.bridgerealty.com.au/sale/nsw/northern-beaches/brookvale/commercial/industrial/8497788>

Key Features Include:

- * Air-conditioning
- * Fresh epoxy warehouse floor
- * Clearspan throughout
- * Spacious office with plenty of natural light
- * Kitchenette
- * 3 Phase power
- * Rollershutter access
- * Short term lease until Dec 2025.



Andrew Holland
0423 314 862



41/49-51 Mitchell Road, Brookvale

Measurements are approximate. Not to scale. Illustrative purposes only. Open2view does not take any responsibility for any information supplied.